



Club Items for Sale

Box of Coasters \$10-
 Hats \$8-
 Mugs \$5-
 Membership due 1st July 2011

July 2011

SUN	MON	TUE	WED	THU	FRI	SAT
					1	2
3	4	5	6			
10	11	12	13			
17	18	19	20			
24						
31						

12th July 7.30pm
Tuesday Committee Meeting
TBA

6th July 7.30pm
Wednesday Club Meeting
Intermediate Competition
Plus
Annual General Meeting

August 2011

SUN	MON	TUE	WED	THU	FRI	SAT
	1	2	3			
7	8	9	10			
14	15	16	17			
21						
28	29	30	31			

9th August 7.30pm
Tuesday Committee Meeting
TBA

3rd August 7.30pm
Wednesday Club Meeting
Open Competition
Any topic

2011 COMPETITIONS & FUNCTIONS	
July 2011	Intermediate Competition up to 15 min plus Annual General Meeting
August 2011	Open Competition, any topic up to 15 min
September 2011	Themed Competition: Rope up to 15 mins

Tickets for the Newcastle National Video Festival 2011 available from club now

From the Presidents Desk



JUNE MEETING

Wow !! What a fun night we had doing our "Christmas " shoot. Everyone came along with enthusiasm and willingness to enjoy the night. Our Director arrived a bit late, so we had a couple of run throughs to be ready for the shoot. Six guests turned up and became willing participants in our movie. Thanks goes to all that helped out on the night, Director Bob, Geoff, Mansel and Mark for cameras.

THIS MEETING

Tonight is the "Intermediate" competition, a maximum of 15 minutes, on any theme, for all members except Restricted, this is a chance for these members to compete and at the end, the winner will move up to Restricted group. Tonight is also our AGM, and it is your chance to vote for a committee to run our club for the next year.

I would like to personally thank the outgoing committee for all the effort they have done in the last year to help make my position run smoothly, for without this help I could not do the things that need to be achieved.

Every committee person has a role to play in our club, and with that in mind, I encourage you to step forward to help fill all the positions.

AUGUST MEETING

Next meeting will be the "Open Competition" This can be on any subject to a maximum of 15minutes.

SEPTEMBER MEETING

In September the "Theme" competition will be "ROPE" inspired from "Alfred Hitchcock"

This will be the closing date for all your movies for this year's "Festival".

FAMM Convention 2012

This will be held at Yowani Country Club, ACT from 26th March 2012 to 30th March 2012.

Conventioneers are to make their own accommodation bookings, for this information you can look up the FAMM website, or ask me.

A thank you to all members that have been supportive of all we have achieved this last year.

Laurie Chesterfield

DISCLAIMER

In regard to products, services and/or procedures which are either advertised or mentioned in this magazine, members should determine for themselves the reliability and/or suitability of these products for their own particular requirements. Newcastle Video Moviemakers inc., cannot accept responsibility for any products or service statement made herein and the opinions or comments by contributors are not necessarily the views of the club, its committee, its members or the editor.

COPYRIGHT

All articles and photos appearing in this magazine are subject to Copyright and may not be reproduced in whole or part without the author's consent. Enquiries regarding permission should in the first instance be directed to the Editor, Newcastle Video Moviemakers Inc.

CLUB PHOTOS

Graham Bryant came 3rd for 'Newcastle Nightscapes' in our 'Old Buildings' competition, Mark Owens our treasurer presenting this award



From young and old, enjoying our Christmas video shoot



Bob Cook, centre right directing the Christmas video shoot



Our camera men videoing our Christmas video, from rear, Mansel Williams, Mark Owens and Geoff Peel



© Tech Topics with Joe Leon - July 2011

All Registered Names, Trademarks, Logos and Images appearing in this article are subject of Copyright to their respective owners.



SMPTE (Society of Motion Picture and Television Engineers) Expo 2011 ...



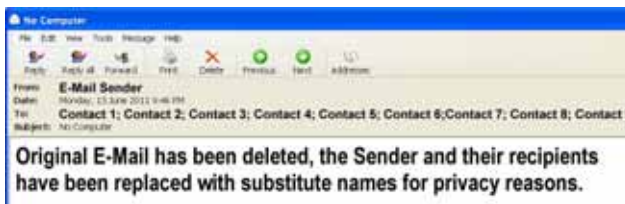
The **Biennial** (Every two years) **SMPTE Conference and Exhibition** is upon us once more at **Darling Harbour, Sydney**. It's certainly the place to visit if you want to see the latest and greatest. Although the show is aimed at the high end **Professionals** and **Engineers** there should be something of value for **Amateur Movie Makers**. Several **NVM** members have already registered and are going.

Registration: Pre-register for Free entrée at: Home Page: <http://www.smpte.com.au>

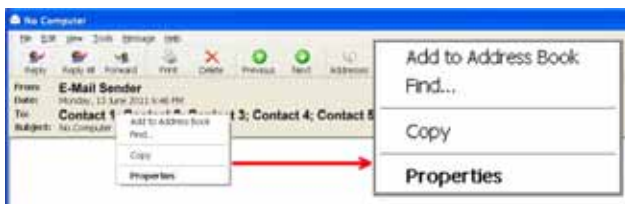
PS: Don't forget it will be two years till the next one.

Sending & Receiving Bulk Emails ...

There's many of you, myself included who have sent and received bulk **E-Mails**. Unfortunately too many do not consider the privacy of the contacts in their **Address Book** by revealing to all recipients each others **Names** and **E-Mail Addresses**, eg:



This sample **E-Mail** clearly shows all recipients and it's very easy to acquire their **E-mail Addresses**.



Simply **Right-Click** on any recipients name, **Click** on **"Add to Address Book"** or **"Properties"** and the **E-Mail Address** is yours.

The only problem is we made available to all the **E-Mail Recipients** each others **E-Mail Addresses** without their permission. There may be good reasons why some of the **Recipients** would like to keep their **E-Mail Addresses** private like separated Spouses or Estranged family members, etc. Normally we send bulk E-mails like shown below with all the contacts on the **To:** line. To send Bulk **E-Mails** without revealing the recipients



to each other is easy to do and has one major benefit. Each recipient may think that you took the trouble to send an individual **E-Mail** just to them.

In the **To:** box just add one contact and the rest in the



Bcc: (Blind Carbon Copy). See above and below for explanation. **Outlook Express** was used for examples and other **E-Mail Applications** should have similar options.

JPL



Adds the contact or group name selected in the **Address Book** list to the **Bcc** box of your outgoing message. For each person listed in the **Bcc** box, only that person and the message sender know to whom the message was sent.

Some people mistakenly think all you need to do is find a scrap of white paper or card, put the card in front of the camera and press the button marked "White Balance". Well, there's more to it than that if you want to have complete control over the video you shoot.

What is white balance?

White balance is a camera control that adjusts the camera's colour sensitivity to match the prevailing colour of outdoor light (cooler), indoor light (warmer) or fluorescent light (greener). On most cameras, white balance may be set either automatically or manually. On professional cameras, white balance can be set to match exactly the light source you're shooting with.

Auto White Balance:

Many cameras allow completely "automated" white balance. Amateur camera operators are fooled into thinking you don't have to worry about whether you're shooting indoors or out, the camera makes the colour decisions for you when this setting is engaged. While auto white balance is convenient it's also prone to colour shifts, especially under mixed light sources. For best results, professionals always perform a manual white balance anytime lighting conditions change.

Manual White Balance:

Manual white balance is a setting that allows camera operators to match the exact lighting used. It is the professional way to shoot and is very easy to accomplish. The operator generally shoots a "white card" and presses a white balance button that adjusts the red, green and blue CCD signals so that the white card appears "white" and exhibits no colour cast. This procedure, of course, must be performed every time you encounter different lighting conditions. All professional cameras allow you set a white balance manually.

To determine what is "white", the electronics in your camera must be shown a white object under the light that you will be shooting in. This is called "white balancing" your camera and you must do a white balance every time lighting conditions change.

It is especially important to re-white balance when moving between indoors and outdoors, and between rooms lit by different kinds of lights. During early morning and late evening, the daylight changes quickly and significantly. Although your eyes don't always notice, your camera will.

What is Colour Temperature?

Each type of light has a numerical temperature, here are the (rough) temperatures of typical lighting conditions:

Shade
6500K
Sunlight
6000K
Fluorescent
5500K - 4000K
Twilight
4000K
Incandescent (tungsten)
3500K - 3000K

The human eye/brain automatically compensates for the colour temperature of light falling on an object. When you move from the bright, blue-tinted sunlight to the dim, yellow-tinted indoor lighting, your eye automatically adjusts to the different colour of light and changes your perception accordingly. Unfortunately, even the most expensive video cameras can't automatically do what the eye does, so we have to show our cameras what we want them to read as "white" in any given scene. It is imperative that you white balance manually for the absolute best results.

The Importance of White Balancing No single shot stands alone. In any given location, and within a sequence of shots, or scene, you must strive to maintain consistency with your white balance. Knowing how often to white balance is mostly a matter of experience.

Thanks to Vortex Media www.vortexmedia.com
Part 2 will be in next months magazine.

